
MADEAUX BY RICHARD SMITH



ANTHEA 01 - SAFFRON

A stylised rendering of an Italian eighteenth century brocatelle hand printed on hand woven silk. The soft colourings combined with a natural matt ground make for an ethereal, classic fabric.

Material: 100% Hand Woven Silk - Hand Printed in England

Printed Width: 51.25"/130cm

Repeat: 31.25"/79cm V x 25.5"/65cm W

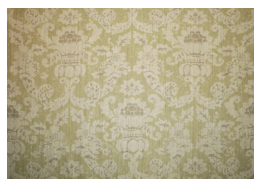
ALSO AVAILABLE IN THE FOLLOWING COLOURWAYS



02 - MAUVE



06 - BLUE



07 - OLIVE



09 - DOVE

www.madeaux.com

   @madeauxhome

MADEAUX BY RICHARD SMITH



ANTHEA 02 - MAUVE

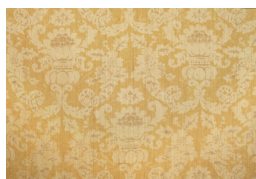
A stylised rendering of an Italian eighteenth century brocatelle hand printed on hand woven silk. The soft colourings combined with a natural matt ground make for an ethereal, classic fabric.

Material: 100% Hand Woven Silk - Hand Printed in England

Printed Width: 51.25"/130cm

Repeat: 31.25"/79cm V x 25.5"/65cm W

ALSO AVAILABLE IN THE FOLLOWING COLOURWAYS



01 - SAFFRON



06 - BLUE



07 - OLIVE



09 - DOVE

www.madeaux.com

   @madeauxhome

MADEAUX BY RICHARD SMITH



ANTHEA 06 - BLUE

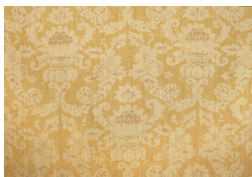
A stylised rendering of an Italian eighteenth century brocatelle hand printed on hand woven silk. The soft colourings combined with a natural matt ground make for an ethereal, classic fabric.

Material: 100% Hand Woven Silk - Hand Printed in England

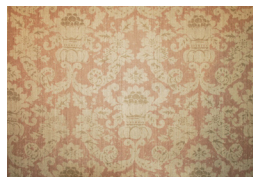
Printed Width: 51.25"/130cm

Repeat: 31.25"/79cm V x 25.5"/65cm W

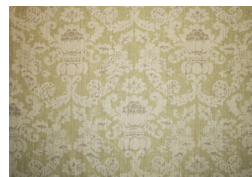
ALSO AVAILABLE IN THE FOLLOWING COLOURWAYS



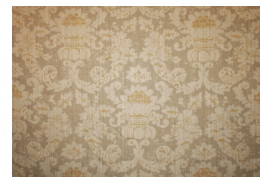
01 - SAFFRON



02 - MAUVE



07 - OLIVE

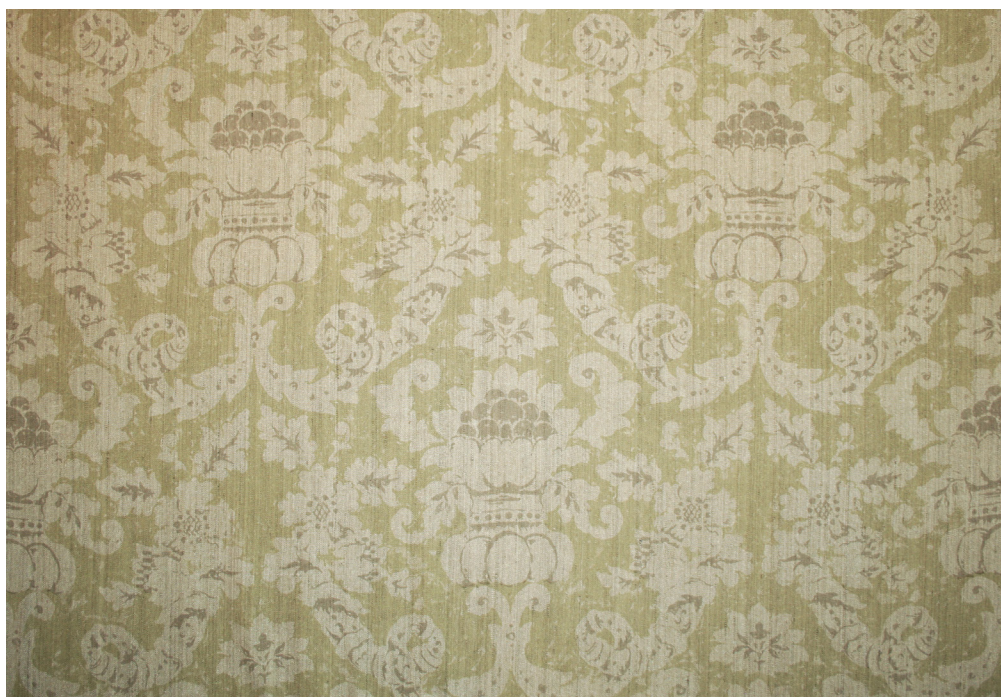


09 - DOVE

www.madeaux.com

   @madeauxhome

MADEAUX BY RICHARD SMITH



ANTHEA 07 - OLIVE

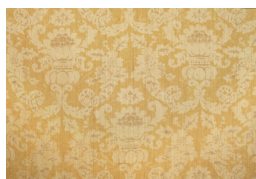
A stylised rendering of an Italian eighteenth century brocatelle hand printed on hand woven silk. The soft colourings combined with a natural matt ground make for an ethereal, classic fabric.

Material: 100% Hand Woven Silk - Hand Printed in England

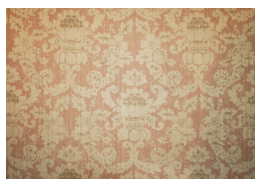
Printed Width: 51.25"/130cm

Repeat: 31.25"/79cm V x 25.5"/65cm W

ALSO AVAILABLE IN THE FOLLOWING COLOURWAYS



01 - SAFFRON



02 - MAUVE



06 - BLUE



09 - DOVE

www.madeaux.com

   @madeauxhome

MADEAUX BY RICHARD SMITH



ANTHEA 09 - DOVE

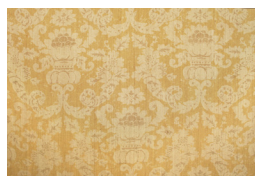
A stylised rendering of an Italian eighteenth century brocatelle hand printed on hand woven silk. The soft colourings combined with a natural matt ground make for an ethereal, classic fabric.

Material: 100% Hand Woven Silk - Hand Printed in England

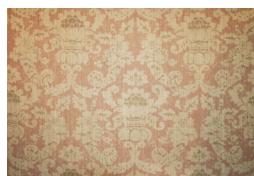
Printed Width: 51.25"/130cm

Repeat: 31.25"/79cm V x 25.5"/65cm W

ALSO AVAILABLE IN THE FOLLOWING COLOURWAYS



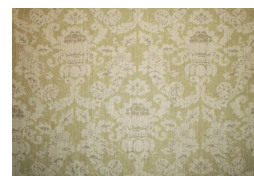
01 - SAFFRON



02 - MAUVE



06 - BLUE



07 - OLIVE

www.madeaux.com

   @madeauxhome