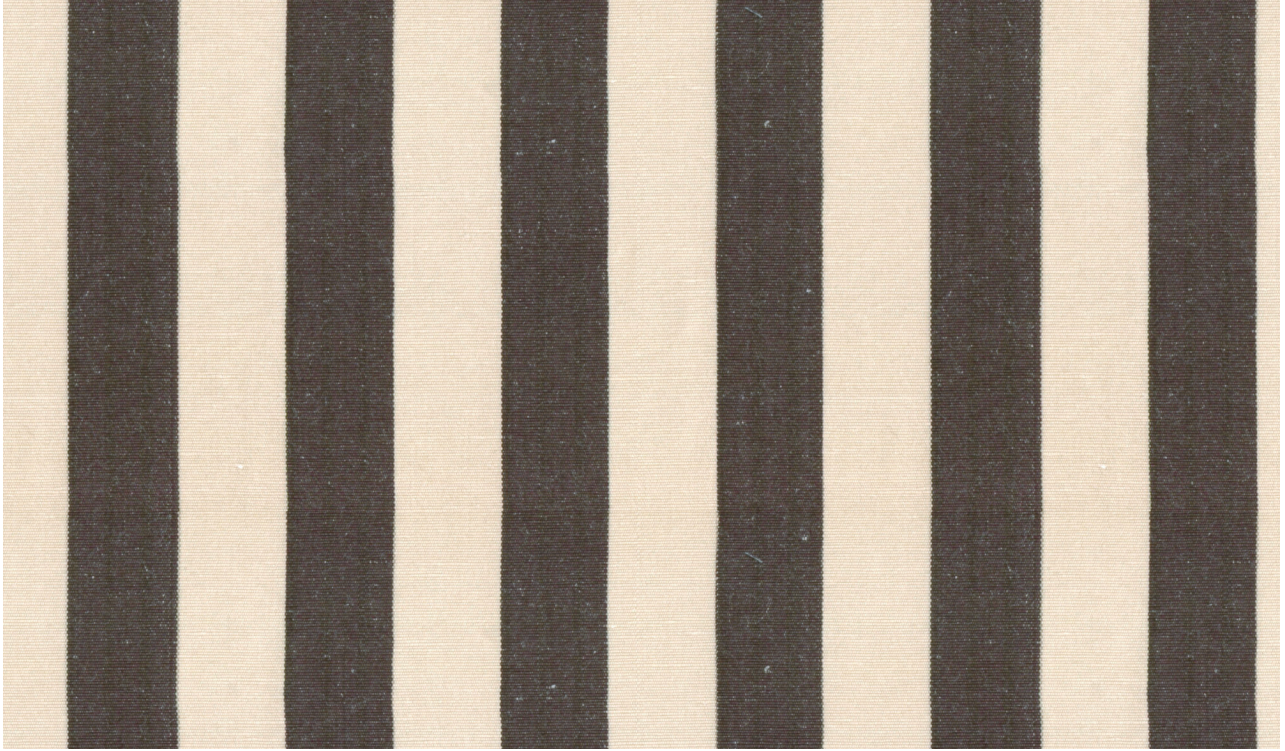


# MADEAUX

by Richard Smith



Area Shown 30cm / 12"

## WOVENS

*Eliza*

05 Charcoal  
42214-105

Knit backing recommended for  
light upholstery

### Material

33% Silk / 67% Linen

### Horizontal Repeat

Stripe Width - 2.5cm / 1"

### Sold By

Metres / Yards

### Usage

Drapery / Light Upholstery

### Width

140cm / 55.25"

### Vertical Repeat

n/a

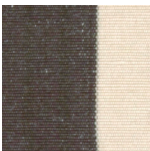
### Minimum

2 Metres / 2 Yards

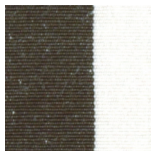
### Care

Dry Clean Only

COLOURS: 2 Available Colours



05 Charcoal



06 Checkmate