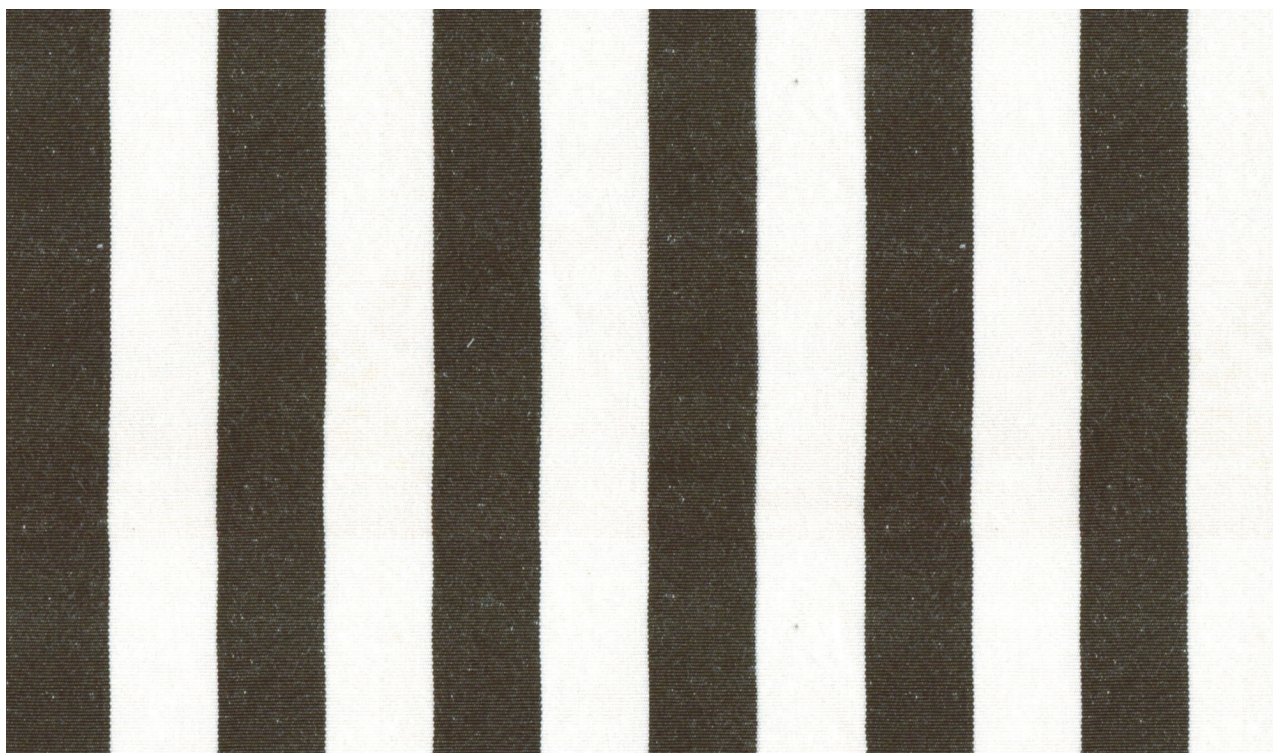


MADEAUX

by Richard Smith



Area Shown 30cm / 12"

WOVENS

Eliza

06 Checkmate
42214-100

Knit backing recommended for
light upholstery

Material

33% Silk / 67% Linen

Horizontal Repeat

Stripe Width - 2.5cm / 1"

Sold By

Metres / Yards

Usage

Draperies / Light Upholstery

Width

140cm / 55.25"

Vertical Repeat

n / a

Minimum

2 Metres / 2 Yards

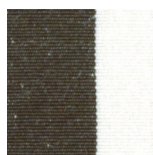
Care

Dry Clean Only

COLOURS: 2 Available Colours



05 Charcoal



06 Checkmate