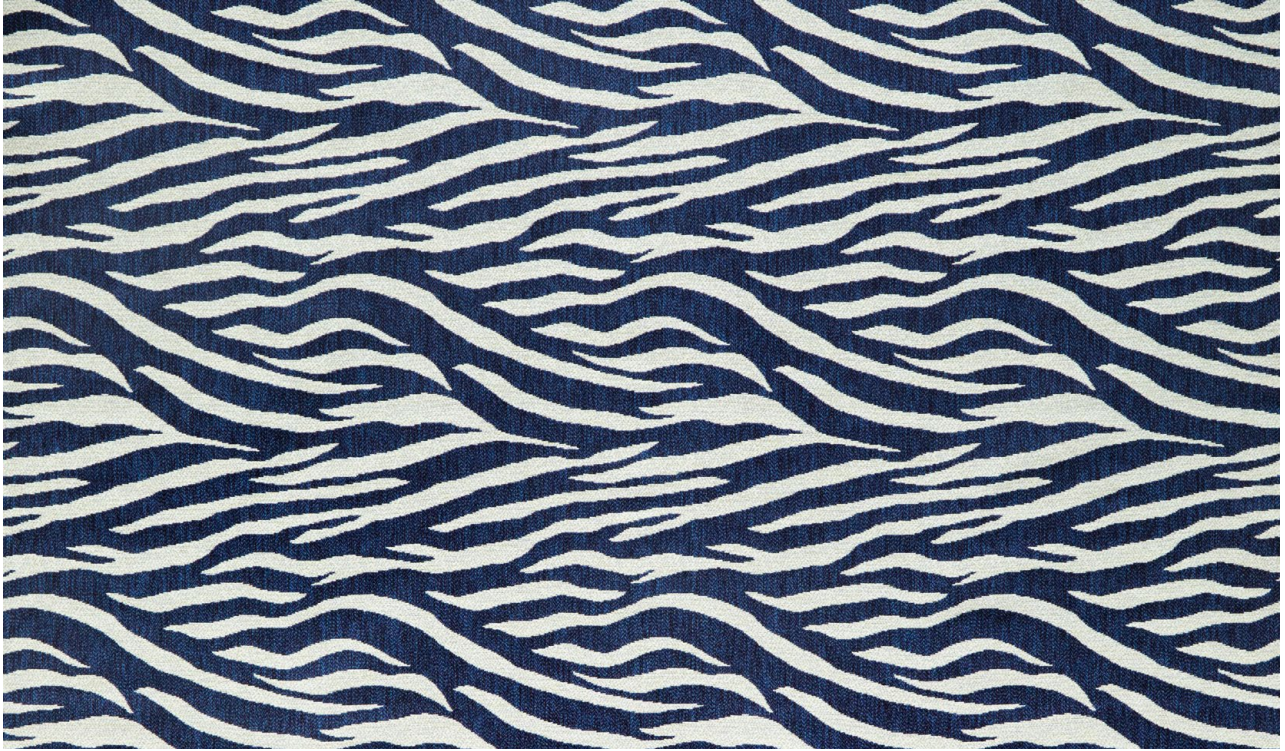


# MADEAUX

by Richard Smith



Full Width 140cm / 55.1"

OUTDOOR

*Zebra*

03 Marine  
42290-110

Martindale: 40,000

**Material**

100% Polypropylene  
Outdoor Yarns

**Horizontal Repeat**

35cm / 13.8"

**Sold By**

Metres / Yards

**Usage**

Indoor / Outdoor

**Width**

140cm / 55.1"

**Vertical Repeat**

34.5cm / 13.6"

**Minimum**

2 Metres / 2 Yards

**Care**

Washable.  
Cool iron on reverse only.

COLOURS: 4 Available Colours



01 Dune



02 Seacloud



03 Marine



04 Ebony

OUTDOOR

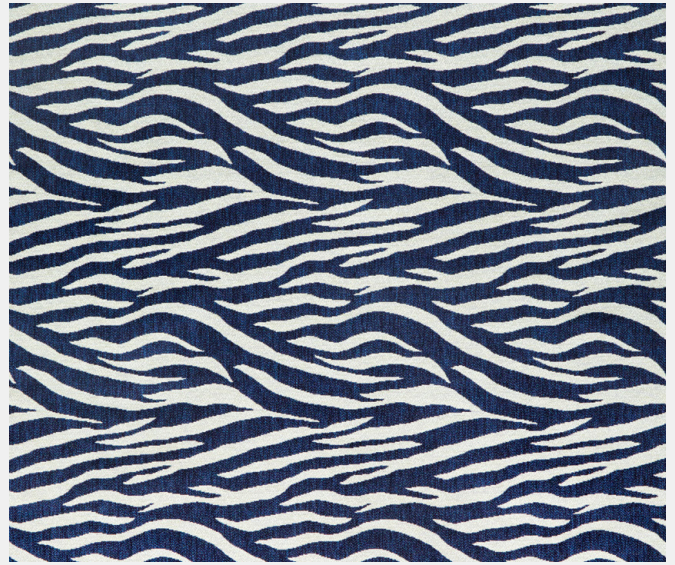
*Zebra 03 Marine*

Made from 100% polypropylene outdoor yarns, this design has excellent outdoor qualities - light fastness, resistant to mould and chlorine - as well as great durability and soft to the touch.

The yarns are 100% recyclable and are rated non toxic.

WASHABLE AT 40°

COOL IRON ON REVERSE ONLY



**TECHNICAL DETAILS**

<b>LIGHT FASTNESS</b>	UNI EN ISO 105-B02	>7 (max 8 blue scale)	
	UNI EN ISO 105-B04	>4-5 (max 5 grey scale)	
<b>ABRASION RESISTANCE</b>	UNI EN ISO 12947	40,000 CYCLES	
<b>PILLING</b>	UNI EN ISO 12945-2	5 (max 5)	
<b>COLOUR FASTNESS DRY RUBBING</b>	UNI EN ISO 105-X12	5 (max 5)	
<b>COLOUR FASTNESS WET RUBBING</b>	UNI EN ISO 105-X12	4-5 (max 5)	
<b>SWIMMING POOL WATER FASTNESS</b>	UNI EN ISO 105-E03	5 (max 5)	
<b>RESISTANCE TO LIQUID (STAINS)</b>	UNI EN ISO 12720	RED WINE	5 (max 5)
		SUN CREAM	5 (max 5)
		CLEANING SOLUTION	5 (max 5)
		OLIVE OIL	5 (max 5)
		TEA (80° C)	5 (max 5)
		BEER	5 (max 5)
<b>DIMENSIONAL CHANGE IN WASHING</b>	UNI EN25077:1996	<1%	
<b>RESISTANCE TO MOULD AND BACTERIA</b>		100%	
<b>RESISTANCE OF COLOURS IN WASHING MACHINE</b>		100%	
<b>RECYCLABLE</b>		100%	
<b>CERTIFICATION</b>	OEKO-TEX Class I (non allergenic, articles for babies)		
<b>FIRE TESTS</b>	CAL 117, NFPA 260, and IMO Part 8 PASS		

STANDARD 100 by OEKO-TEX® is one of the world's best-known labels for textiles tested for harmful substances.