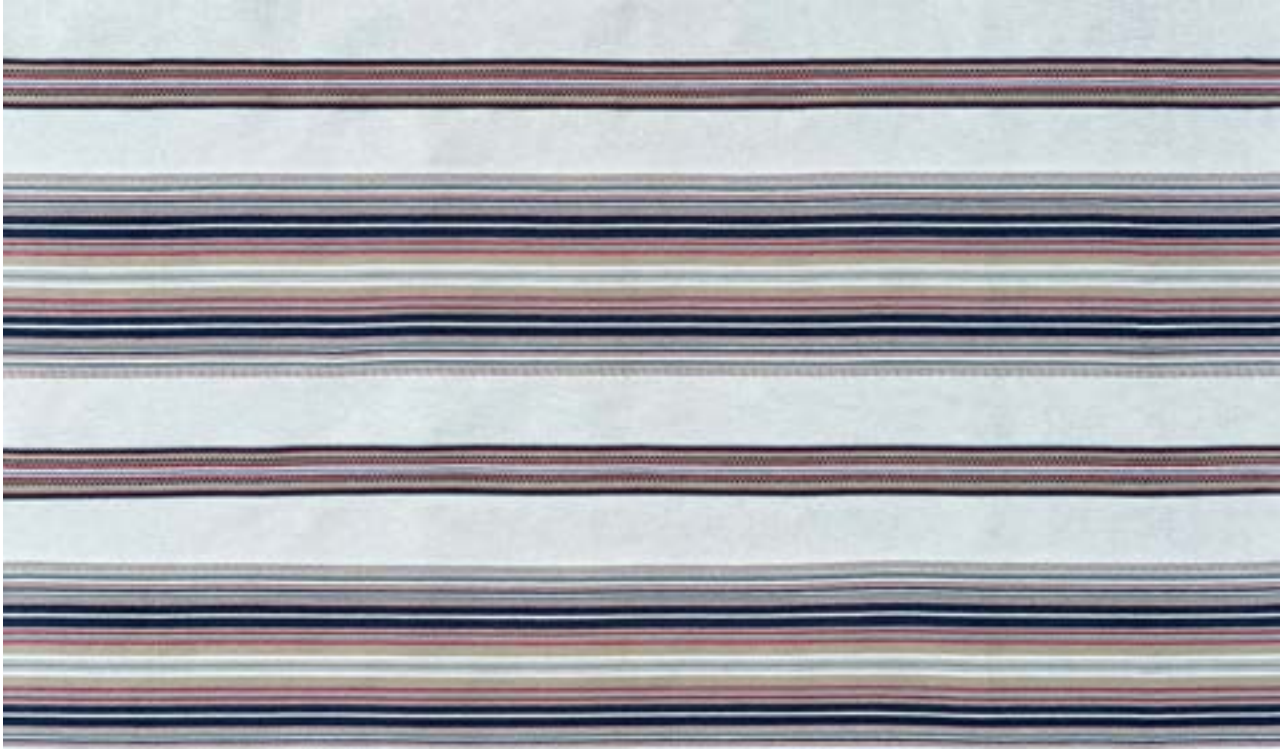


MADEAUX

by Richard Smith



Full Width 134cm / 52.75"

INDOOR WEAVE

Claiborne

01 Red and Blue
42304-100

Martindale: 25,000

Material

81% Cotton / 13% PAN /
3% CV / 3% PL

Horizontal Repeat

Stripes appear horizontally

Sold By

Metres / Yards

Usage

Dual Purpose

Width

134cm / 52.75"

Vertical Repeat

40cm / 15.75"

Minimum

2 Metres / 2 Yards

Care

Dry Clean

COLOURS: 1 Available Colour



01 Red and Blue